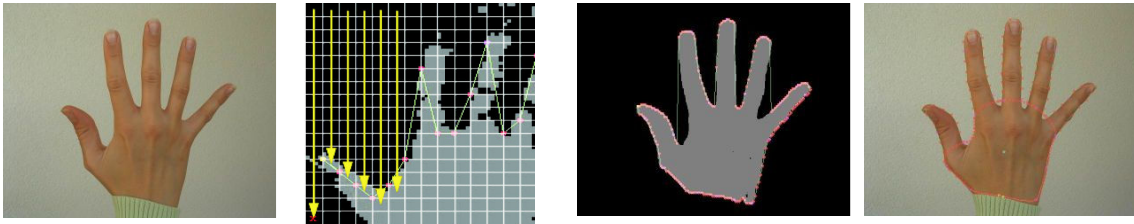


Project no. 4 (2 persons)

Active contour-based deformable shape recognition



The task is divided as follows:

- (a) (Person 1, 2) Acquire several colour image sequences that contain a moving and deformable shape – of a human head or hand.
- (b) (P. 1) By colour analysis, in the first image of the sequence, detect a binary image with the foreground object.
- (c) (P. 2) Perform edge image detection, and then mask it with the colour-based mask. Next change it into a binary image and make morphological operations of dilation and erosion.
- (d) (P. 1 and 2) In the binary image make an outer contour initialisation. Implement the active contour update rule.
- (f) (P. 1 and 2) Implement a visualisation of all processing steps. Make test runs of the program. Prepare a report.